



Hydraulic Hammers

Hardest Hitting, Most Productive Hammers in the Industry

Full Range of Hammers
with Proven Design, Suited
for All Applications and
Ranges of Carriers

All Models Backed by
NPK's 3-Year Limited
Warranty

Comprehensive Dealer
Network Providing Sales,
Parts and Service, and
Backed by the Industry's
Best Support!

NPK ATTACHMENTS DESIGNED, BUILT & BACKED BY NPK

Hydraulic Hammers



PH-06



PH-07



PH-1



PH-2



PH-3



PH-4



GHD-6



GHD-7



GH-9



GHD-10



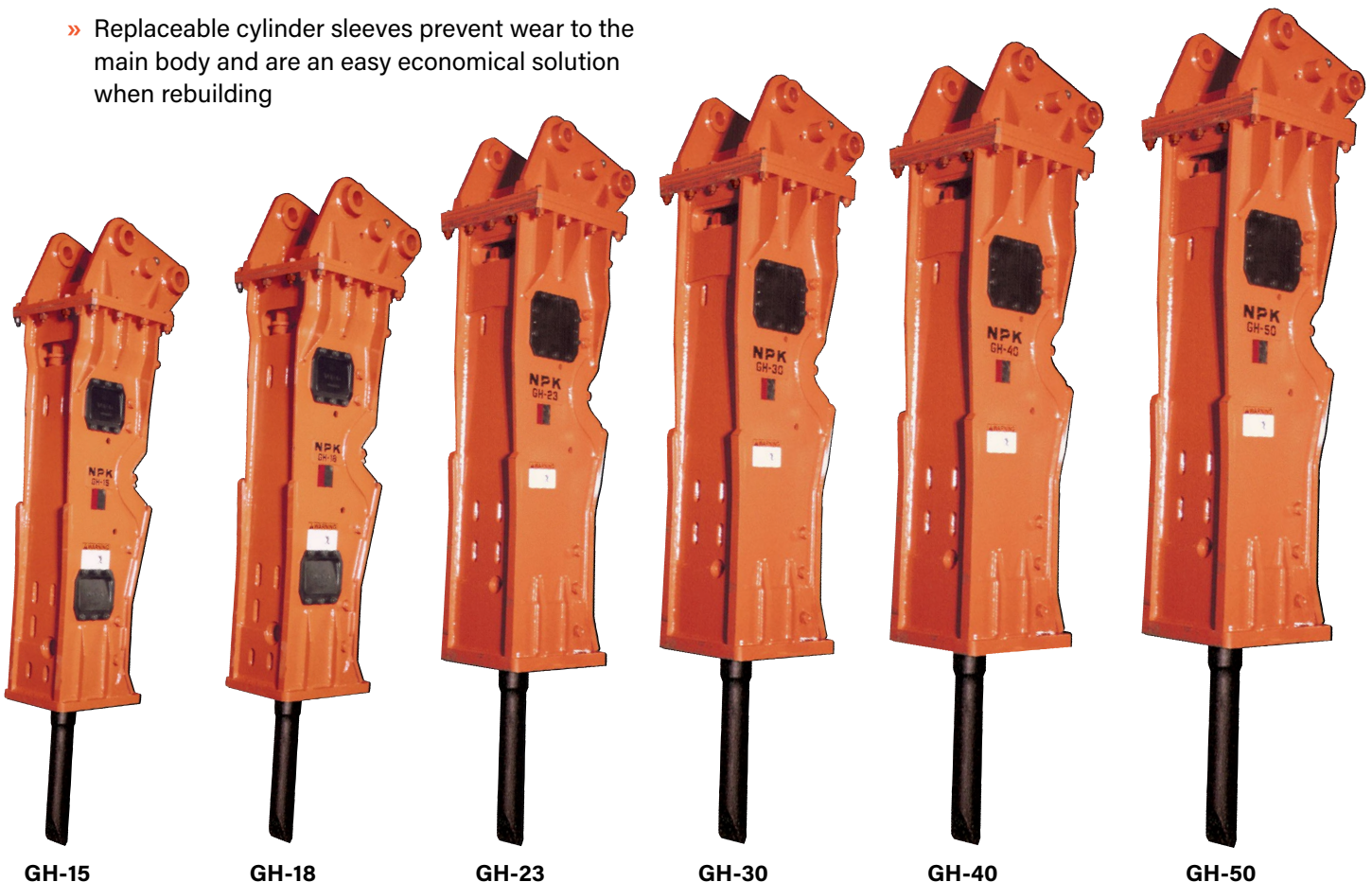
GH-12

THE RIGHT HAMMER FOR EVERY JOB!

Service, Parts and the Best Dealer Network

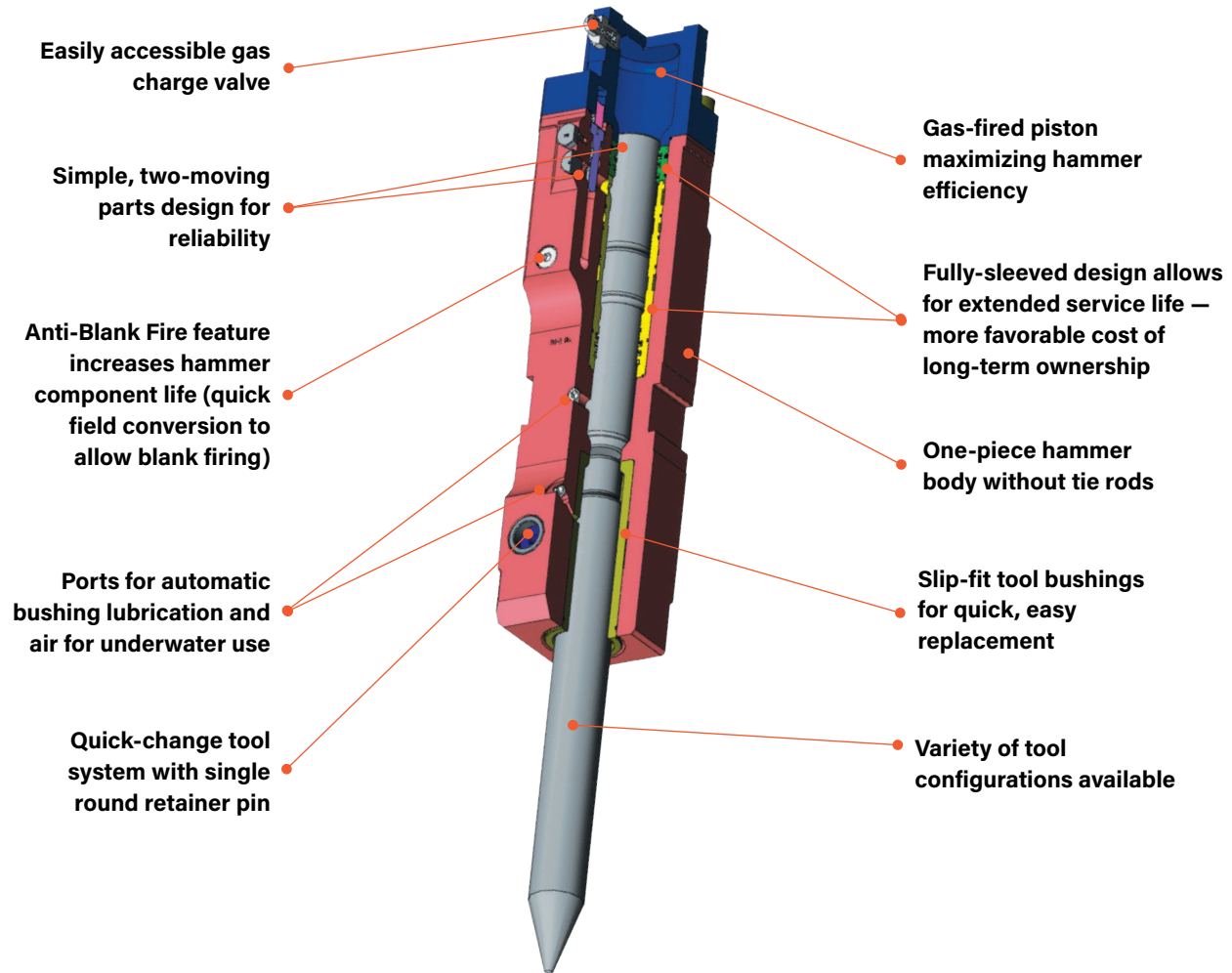
Hammers for an assortment of carriers: mini-excavators, skid steers, backhoes, loaders and full-size excavators

- » Favorable power-to-weight ratio
- » Gas-powered operating system creates more impact per blow than any hammer in the industry
- » Eliminates bladder type accumulators that are prone to sudden failure and costly maintenance
- » Only two moving parts means increased productivity and reliability
- » Anti-blank firing (ABF) system prevents hammers from firing if the chisel is not loaded, minimizing wear. The result is safer, more efficient operations and longer hammer life.
- » The round, rotating, tool retaining pin contributes to longer life and easy tool replacement
- » Replaceable cylinder sleeves prevent wear to the main body and are an easy economical solution when rebuilding
- » Separate ports for bushing lubrication and air for underwater applications
- » When maintained and serviced regularly, NPK Hammers can last over 20 years!
- » Designed and manufactured to NPK's high standards of quality
- » Durability and serviceability are two key advantages of NPK Hydraulic Hammers.



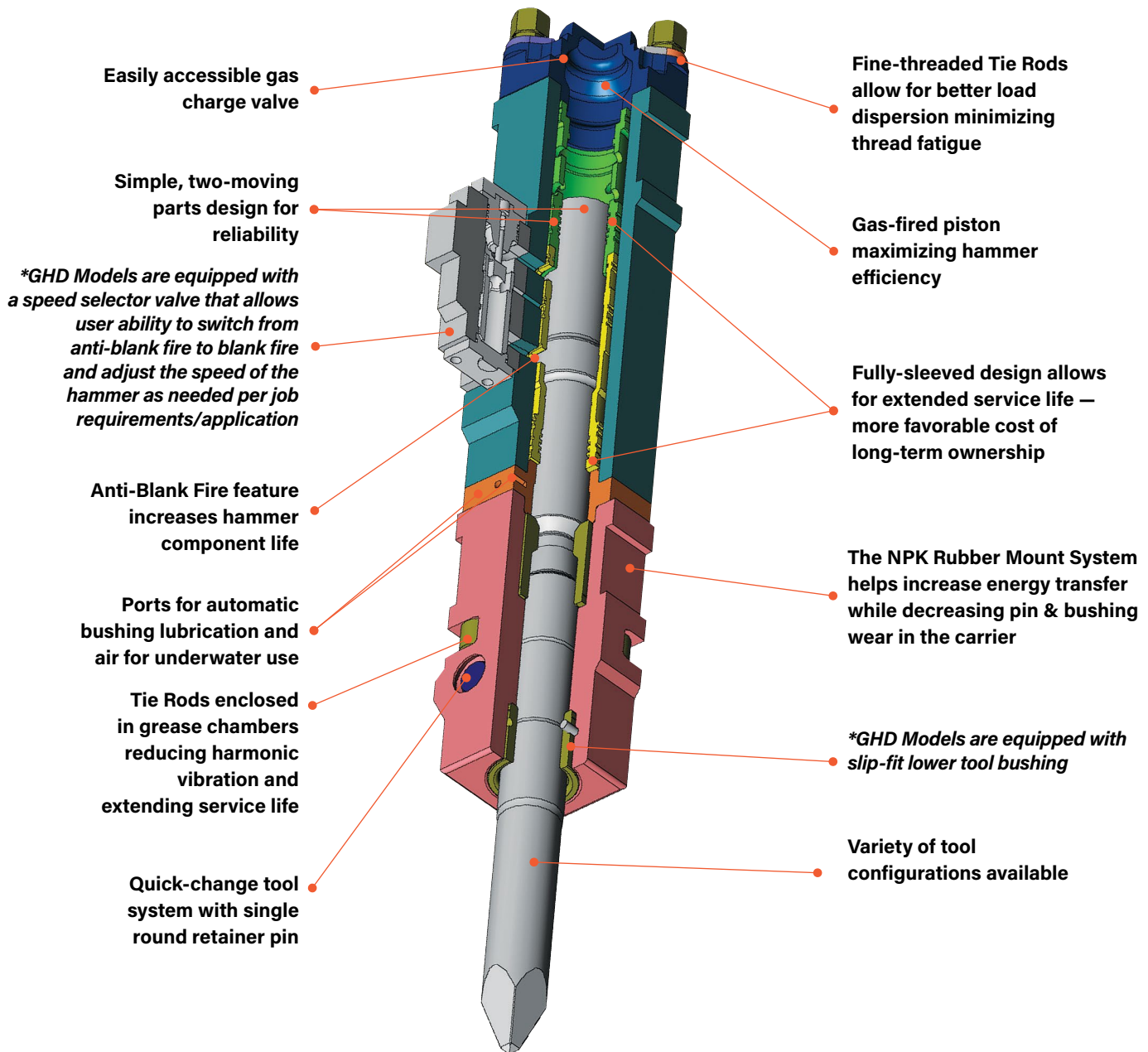
Hydraulic Hammers

Small Hammer Lineup: **PH-SERIES**



ALL MODELS BACKED BY NPK'S 3-YEAR LIMITED WARRANTY

Medium to Large Hammer Lineup: **GH-SERIES**

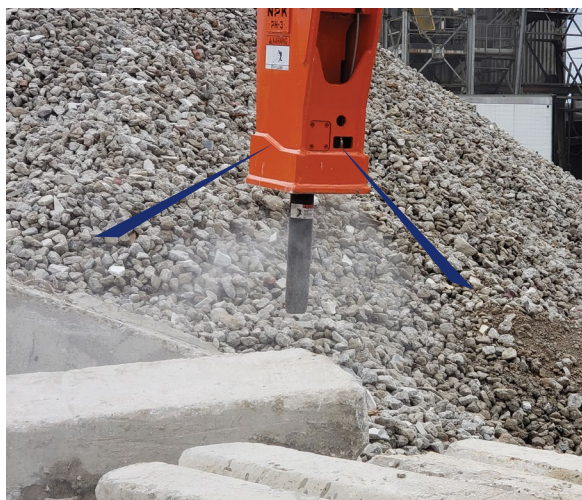
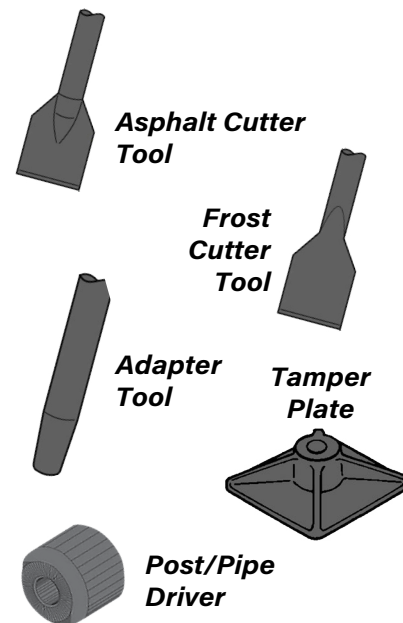


Hydraulic Hammers

Standard & Specialty Tools



- » **Chisel (FX) or (FY)**
Controlled breakage of concrete, layered sedimentary rock (trenching, breaking oversize), general demolition
- » **Blunt Tool (E)**
Concrete slab, bridge decking, breaking oversize, slag removal
- » **Moil Point (P)**
Soft material, breaking concrete structures — columns, etc., highway construction, general demolition
- » **Core Tool (PC)**
Carbide steel core minimizes wear and breakage. Hard rock, general demolition



Dust Suppression

Currently available on NPK Hammer models PH-1, PH-2, PH-3 and PH-4 with enclosed bracket.

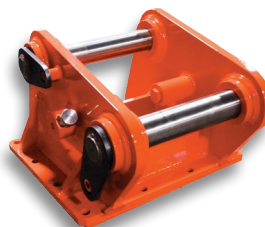
- » Water spray nozzle integrated into bracket
- » Wide spray angle for maximum coverage
- » Easy access for serviceability
- » Ready to be connected to water supply
(NOTE: Water reservoir and pump not included.)

NPK's water-ready hammers help to make working environments safer and to meet OSHA silica dust reduction regulations.

Dedicated Mounting Kits

- » Bracket weldment designed and built by NPK to the exact OEM bucket specs to mount your NPK attachment to your carrier:

- | | |
|------------------|--------------------------------------------------------|
| ▪ Mini-excavator | ▪ Full-size excavators |
| ▪ Skid steers | ▪ Available for specialty couplers also... Consult NPK |
| ▪ Backhoes | |
| ▪ Wheel loaders | |



- » Whip hoses and hardware package included
- » OEM match pins available for most carriers (up to 110 mm diameter)
- » Made in USA




Durability / Productivity / Rebuildability

AUTO LUBE SYSTEMS

- » Hydraulically-driven, automatically providing a continuous supply of grease while hammer is running
- » Reduce maintenance costs by extending hammer tool bushing life
- » Reduce labor costs due to elimination of manual greasing
- » Reliable even in low temperatures
- » Suitable for special lubricants including copper-based pastes
- » All NPK Auto Lube Systems include mounting hardware and adapter fittings

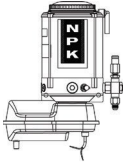
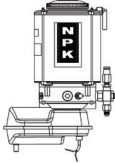
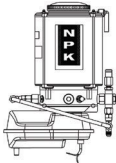
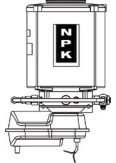
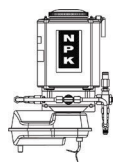
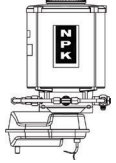
Hammer Mounted Auto Lubes

- » Ideal for hammers being used on multiple machines

	G015	G025	G050
			
Cartridge Capacity	14 oz	14 oz	14 oz x 2
Max Output/ Hr at 24V	0.43 lbs (0.19 kg)	0.43 lbs (0.19 kg)	0.85 lbs (0.38 kg)
Models	PH-3, PH-4, GH-6	GH-7, GH-9, GH-10, GH-12, GH-15, GH-18	GH-23, GH-30, GH-40, GH-50

Carrier Mounted Auto Lubes

- » Ideal for dedicated hammer carriers

	G-075/G-075L	G-100/G-100L	G-150/G-150L	G-153/G-153L	G-175/G-175L	G-186/G-186L
						
Reservoir Capacity	4.4 lbs (2 kg)	8.8 lbs (4 kg)	8.8 lbs (4 kg)	17.6 lbs (8 kg)	8.8 lbs (4 kg)	17.6 lbs (8 kg)
Max Output/ Hr at 24V	0.5 lbs (0.22 kg)	0.5 lbs (0.22 kg)	1 lb (0.44 kg)	1 lb (0.44 kg)	1.5 lbs (0.68 kg)	1.5 lbs (0.68 kg)
Models	PH-3, PH-4	GH-6, GH-7, GH-9	GH-10, GH-12, GH-15, GH-18, GH-23		GH-30, GH-40, GH-50	

NOTE: Max Outputs specified are per hour at 24V. (Numbers would be half at 12V.) Hose from Auto Lube to Hammer is not included and is a dealer supplied option. L Models come with a low level switch that activates a warning light and buzzer in the cab, and can be wired (on solenoid energized circuits) to shut off hammer when insufficient grease levels are detected.

HAMMER GREASE

- » It is imperative that special lubricants be used in your NPK hammer to protect the main components.
- » NPK offers hammer grease to meet severe-duty job requirements.
Our specially formulated moly-based grease & chisel paste are offered in:



- » 35 lb. pails
- » 120 lb. kegs
- » Cases of 14 oz. cartridges for Carrier Mounted Auto Lubes
- » Cases of refillable 14 oz. cartridges of Chisel Paste for Hammer Mounted Auto Lubes

NPK

Hydraulic Hammers

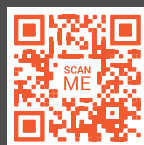
The Right Model for Every Machine!

SPECIFICATIONS

NPK Model	Impact Energy Class* (ft lb)	***Impact Frequency (bpm)	Recommended Carrier Weight (lb-metric tons)	Oil Flow (gpm-lpm)	Operating Pressure (psi-bar)	Working Weight** (lb-kg)	Tool Diameter (in-mm)	Tool Working Length (in-mm)
PH-06	150 ft lb	480 - 1,200 bpm	2,400 - 4,000 lb 1 - 1.8 metric tons	4 - 9 gpm 15 - 35 lpm	2,030 psi 140 bar	220 lb 100 kg	1.7 in 42 mm	11.8 in 300 mm
PH-07	200 ft lb	450 - 1,300 bpm	3,000 - 6,000 lb 1.3 - 2.7 metric tons	4 - 12 gpm 15 - 45 lpm	2,465 psi 170 bar	275 lb 125 kg	1.9 in 47 mm	12.4 in 315 mm
PH-1	350 ft lb	550 - 1,100 bpm	4,000 - 7,500 lb 1.8 - 3.5 metric tons	7 - 15 gpm 25 - 55 lpm	2,465 psi 170 bar	500 lb 225 kg	2.2 in 57 mm	14 in 356 mm
PH-2	500 ft lb	500 - 1,200 bpm	6,000 - 11,000 lb 2.7 - 5 metric tons	7 - 16 gpm 25 - 60 lpm	2,465 psi 170 bar	610 lb 275 kg	2.6 in 66 mm	15.1 in 384 mm
PH-3	750 ft lb	500 - 1,150 bpm	8,000 - 16,000 lb 3.6 - 7.3 metric tons	12 - 26 gpm 45 - 100 lpm	2,465 psi 170 bar	990 lb 450 kg	3 in 76 mm	16.5 in 419 mm
PH-4	1,300 ft lb	400 - 1,000 bpm	12,000 - 18,000 lb 5.5 - 8 metric tons	13 - 32 gpm 50 - 120 lpm	2,465 psi 170 bar	1,235 lb 560 kg	3.4 in 86 mm	18.5 in 470 mm
GHD-6	2,000 ft lb	N 450 - 800 H 650 - 1,000	22,000 - 31,000 lb 10 - 14 metric tons	24 - 40 gpm 90 - 150 lpm	2,465 psi 170 bar	2,500 lb 1,135 kg	4.2 in 106 mm	19.7 in 500 mm
GHD-7	2,500 ft lb	N 400 - 750 H 550 - 900	28,000 - 46,000 lb 13 - 21 metric tons	26 - 48 gpm 100 - 180 lpm	2,600 psi 180 bar	2,900 lb 1,315 kg	4.6 in 116 mm	23 in 583 mm
GH-9	3,000 ft lb	500 - 670 bpm	40,000 - 56,000 lb 18 - 25 metric tons	40 - 53 gpm 150 - 200 lpm	2,600 psi 180 bar	3,605 lb 1,635 kg	5 in 126 mm	23.9 in 608 mm
GHD-10	4,000 ft lb	N 430 - 550 H 600 - 800	46,000 - 66,000 lb 21 - 30 metric tons	44 - 55 gpm 165 - 210 lpm	2,600 psi 180 bar	4,800 lb 2,180 kg	5.4 in 136 mm	24.4 in 620 mm
GH-12	5,500 ft lb	380 - 480 bpm	56,000 - 86,000 lb 25.5 - 39 metric tons	45 - 58 gpm 170 - 220 lpm	2,650 psi 183 bar	5,655 lb 2,565 kg	5.7 in 146 mm	25.6 in 650 mm
GH-15	8,000 ft lb	320 - 400 bpm	66,000 - 100,000 lb 30 - 45 metric tons	53 - 66 gpm 200 - 250 lpm	2,600 psi 180 bar	6,800 lb 3,085 kg	6.1 in 156 mm	27.2 in 690 mm
GH-18	12,000 ft lb	300 - 400 bpm	70,000 - 114,000 lb 32 - 52 metric tons	58 - 77 gpm 220 - 290 lpm	2,500 psi 172 bar	7,805 lb 3,540 kg	6.5 in 165 mm	29.1 in 740 mm
GH-23	13,500 ft lb	300 - 400 bpm	100,000 - 150,000 lb 45 - 68 metric tons	66 - 85 gpm 250 - 320 lpm	2,600 psi 180 bar	13,295 lb 6,030 kg	6.9 in 174 mm	34.6 in 880 mm
GH-30	15,000 ft lb	310 - 390 bpm	100,000 - 186,000 lb 45 - 84 metric tons	74 - 92 gpm 280 - 350 lpm	2,600 psi 180 bar	13,500 lb 6,125 kg	7.2 in 184 mm	32 in 813 mm
GH-40	17,000 ft lb	240 - 330 bpm	160,000 - 260,000 lb 72.5 - 118 metric tons	79 - 106 gpm 300 - 400 lpm	2,600 psi 180 bar	17,000 lb 7,710 kg	8 in 204 mm	35.4 in 899 mm
GH-50	20,000 ft lb	210 - 280 bpm	240,000+ lb 108+ metric tons	92 - 119 gpm 350 - 450 lpm	2,600 psi 180 bar	24,910 lb 11,300 kg	8.4 in 214 mm	39.7 in 1,008 mm

*"Impact Energy Class" is a marketing rating and does not relate to measured impact energy. **Working weights include tool and mounting bracket. Weights may vary with bracket configurations. ***GHD models are equipped with a speed selector valve that allows user to adjust the speed of the hammer- N is the bpm at Normal Speed, H is the bpm at High Speed. Specifications subject to change without notice.

Each product sold by NPK is subject to an express written warranty. NPK makes no other warranty, express or implied, including any warranty of merchantability or fitness for any particular purpose. NPK is not liable for any incidental or consequential damages.



For more information on Hydraulic Hammers



NPK Construction Equipment, Inc.

7550 Independence Drive
Walton Hills, OH 44146-5541
Phone (440) 232-7900

npkce.com