

# **Pedestal Boom Systems**



- **Heavy-Duty Construction**
- **Wide Range of Models**
- **Large Selection of Options**
- **Systems Custom Designed to Match Your Exact Requirements**
- **Pedestal Booms Made in USA**
- **Comprehensive Dealer Network Providing Sales, Parts and Service, and Backed by the Industry's Best Support!**

**PEDESTAL BOOM SYSTEMS...designed, built and backed by NPK.**





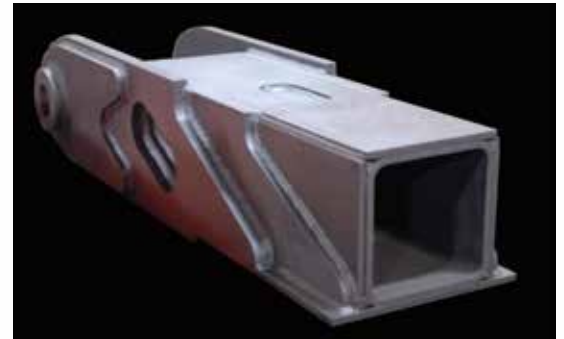
# Pedestal Boom Systems

*ideal for quarry, mining and industrial applications*

NPK Pedestal Boom Systems represent a new generation of cost-effective hydraulic equipment for breaking rock faster, more efficiently and more safely. They include a combination of established features and machinery innovations unmatched in the industry.



**Boom.** Reinforced pivot points and cylinder connections, with oversized pins and steel bushings, assure maximum strength and accurate alignment.



**All stress points** are heavily reinforced.

**Cylinder swing assembly** permits accurate 170° positioning. Reinforced pivot points withstand high stress loads. Swing cylinders are connected directly to the swing frame to eliminate troublesome linkage.



## Hydraulic Power Units.

Power unit sized for hydraulic hammer and pedestal systems, ranging from 30-150 HP (22-112 kW) with tank reservoir capacities of 75, 150 and 225 US gallons (284, 568 and 852 L). They are equipped with 230/460 VAC, suction strainer, pressure filter, return line filter, level and temperature gauge. (Optional voltages can be supplied, consult NPK or your dealer.) Several other options available.



**Rotating base assembly** incorporates a slewing ring that permits accurate 270° (plus) positioning. Shown with optional auto lube systems.

# Heavy-Duty Construction

*assures extended service life*

**Stick** is constructed with heavy-duty, one-piece hammer linkage providing exceptional strength by distributing stress uniformly back to the boom.

**Hoses** are routed through the top of the hammer bracket to afford superior protection from surrounding structures and flying debris.

**NPK Hammers** feature heavy-duty construction throughout with minimum moving parts and our unique gas-powered operating system that creates superior impact energy for maximum efficiency. Heavy-duty mining bracket protects against damage from impact and abrasion.



- **Wide range of models** from 13ft. - 38ft. for all types of stationary and portable crusher installations.
- **Systems** custom designed to match your exact requirements.
- **Choice of proven NPK Hydraulic Hammers and other attachments** such as Buckets, Picks, Grapples, Demo Grabs, Compactors.
- **Large selection of options:**
  - **Lubrication options** – Automatic and manual lubrication systems are available for pedestal booms and hydraulic hammers to ensure trouble-free maintenance and max system life.
  - **Hydraulic power unit options** - Starter panel, tank heater, oil coolers, drip pan and several other options.
  - **Control options** - Electro-hydraulic joystick control package, hydraulic multi-valve control stand and electro-hydraulic radio remote control options are available.
- **Keep production on schedule.** NPK systems break oversize rock and eliminate bridging, maintaining uninterrupted flow of material through the crusher. Reduce crusher downtime.
- **Heavy-duty construction** enhances reliability and assures long, trouble-free operation.
- **Site applications drawing** prepared by an NPK pedestal boom specialist to ensure optimal reach over feeder and crusher. An NPK representative can travel to site and take measurements to ensure accurate component placement.

**Maximize production.** Improve production throughout by maintaining the flow of material to the crusher, and improving hauling efficiency by reducing loader sorting.





# Pedestal Boom Systems

Custom designed to match your exact requirements

## NPK PEDESTAL BOOM SPECIFICATIONS

Pedestal Boom Model	Horizontal Reach with Hammer (ft/m)	Vertical Reach w/o Hammer (ft/m)	Swing Rotation (°)	Boom Weight (lb/kg)
Horizontal measurements are from center of swing to center of tool with hammer in vertical position				
B-40	13.5/4.1	4.8/1.5	170°	5,200/2,359
B-50	16.3/5.0	6.6/2.0	170°	5,500/2,495
B-400	14.8/4.5	4.3/1.3	170°	8,000/3,629
B-500	17.5/5.3	6.6/2.0	170°	8,500/3,856
B-600	19.9/6.1	8.3/2.5	170°	9,500/4,309
B-700	23.5/7.2	11.8/3.6	170°	10,000/4,536
B-800	26.5/8.1	14.1/4.3	170°	10,500/4,763
B-550	20.5/6.2	7.3/2.2	270°	11,000/4,990
B-650	23.4/7.1	10.6/3.2	270°	11,500/5,216
B-5500	21.9/6.7	7.5/2.3	270°	18,100/8,210
B-6500	25.2/7.7	9.4/2.9	270°	19,000/8,618
B-7500	28.9/8.8	11.7/3.6	270°	19,700/8,936
B-8500	32.2/9.8	13.5/4.1	270°	20,300/9,208
B-8500HD	30.2/9.2	18.7/5.7	270°	35,000/15,876
B-9500HD	32.2/9.8	20.3/6.2	270°	38,000/17,237
B-10500HD	34.4/10.5	23.0/7.0	270°	40,600/18,416
B-11500HD	38.1/11.6	27.2/8.3	270°	43,000/19,504

All booms are complete with controls. Numerous options are available. If a different length or configuration is needed, please contact NPK.

## HAMMER COMPATIBILITY

	PH-2	PH-3	PH-4	GH-6	GH-7	GH-9	GH-10	GH-12	GH-15
B-40									
B-50									
B-400									
B-500									
B-600									
B-700									
B-800									
B-550									
B-650									
B-5500									
B-6500									
B-7500									
B-8500									
B-8500HD									
B-9500HD									
B-10500HD									
B-11500HD									

## NPK HEAVY-DUTY HYDRAULIC HAMMER SPECIFICATIONS

Hammer Model	Impact Energy Class (ft lb)	Impact Frequency (bpm)	Oil Flow (gpm/lpm)	Hammer Operating Pressure (psi/bar)	Hammer Working Weight (lb/kg)	Tool Diameter (in/mm)
PH-2	500	500-1,200	7-16/25-60	2,465/170	610/275	2.6/66
PH-3	750	500-1,150	12-26/45-100	2,465/170	990/450	3.0/76
PH-4	1,300	400-1,000	13-32/50-120	2,465/170	1,235/560	3.4/86
GH-6	2,000	460-800	24-40/90-150	2,400/165	2,500/1,135	4.2/106
GH-7	2,500	400-750	26-48/100-180	2,600/180	2,730/1,240	4.6/116
GH-9	3,000	500-670	40-53/150-200	2,600/180	3,420/1,550	5.0/126
GH-10	4,000	400-550	44-55/165-210	2,600/180	4,690/2,125	5.4/136
GH-12	5,500	380-480	45-58/170-220	2,650/183	6,135/2,785	5.7/146
GH-15	8,000	320-400	53-66/200-250	2,600/180	7,300/3,310	6.1/156

Hammers are equipped with heavy-duty, abrasion-resistant mounting brackets, cross-cut chisel tool and gas charging kit. NPK Power Units are equipped with 230/460 VAC, 3-Ph 60 Hz, T.E.F.C. motors, return line filter, level and temperature gauge. Options available. Specifications subject to change without notice.

## HYDRAULIC POWER UNIT SPECIFICATIONS

Maximum Unit Horsepower (HP/kW)	Pump Pressure (psi/bar)	Power Unit Reservoir Capacity (gal/l)	Dry Weight (lb/kg)
30/22	2,400/165	75/284	1,100/499
30/22	2,400/165	75/284	1,100/499
40/30	2,700/186	75/284	1,200/544
50/37	2,900/200	75/284	1,300/590
60/45	3,100/214	75/284	1,500/680
125/93	3,100/214	150/568	2,765/1,254
125/93	3,100/214	150/568	2,765/1,254
125/93	3,150/217	150/568	2,765/1,254
150/112	3,100/214	150/568	2,900/1,315



**NPK Construction Equipment, Inc.**

7550 Independence Drive | Walton Hills, OH 44146-5541

Phone (440) 232-7900

[npkce.com](http://npkce.com)



For more information on Pedestal Boom Systems