

NPK

Demolition Shears



...with NPK's exclusive
INTENSIFIER SYSTEM
providing maximum cutting/piercing
force and faster cycle times!

- *Waved Shape Cutting Blades for Superior Grip and Control of Material*
- *Unique Design that Tightens Frame and Arms to Prevent Distortion*
- *Full 360° Power Rotation*
- *Low Weight with Large Jaw Opening*
- *Slim Line Design to Increase Visibility*
- *NEW "EH" Models have Rotation Circuit Incorporated*

NPK ATTACHMENTS...designed, built and backed by NPK.

Demolition Shears

Designed and built to increase productivity and cut costs

NPK Demolition Shears are engineered and manufactured to world class standards to deliver optimum productivity on the most demanding demolition jobsites and steel processing operations. These shears are engineered to maximize performance with a slim-line design that increases visibility during operation and provides for efficient demolition of steel structures. The unique construction of the arm pin prevents distortion of the main frame and diminishes jaw deflection, this in turn maintains blade tolerances preventing jamming of material between the cutter blades.

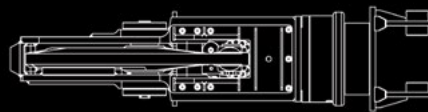
SPECIFICATIONS

NPK Model	Skid Steer Class (lbs)	Excavator Class 2nd Member (lbs)	Excavator Class 3rd Member (lbs)	Working Weight (lbs-kgs)	EH Working Weight (lbs-kgs)	Max Jaw Opening (in-mm)	Max Jaw Depth (in-mm)	Max Reach (in-mm)	Cycle Time (sec)	Oil Flow (gpm-lpm)	Operating Pressure (psi-bar)	Max Cutting Force (tons)
K-3JR	5,000 lbs	5,000 to 8,000 lbs	7,000 to 15,000 lbs	800 lbs 363 kgs	1,000 lbs 454 kgs	13.4 in 340 mm	8.7in 220 mm	46.7in 1,185 mm	0.61 close 1.21 open	8-13 gpm 30-50 lpm	2,610 psi 180 bar	80 tons
K-4JR	6,500 lbs	7,000 to 12,000 lbs	11,000 to 20,000 lbs	1,200 lbs 544 kgs	1,400 lbs 635 kgs	15.7 in 399 mm	10.2 in 260 mm	50 in 1,270 mm	0.68 close 1.33 open	8-13 gpm 30-50 lpm	2,610 psi 180 bar	88 tons

Working weight includes mounting bracket. Specifications subject to change without notice.

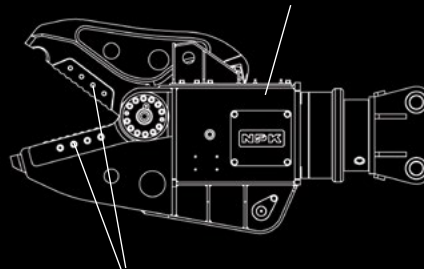
Built tough for years of hard use

Enclosed main frame provides structural integrity and long term durability while protecting piston rod and hydraulic hoses.



Slim-Line Design for Better Visibility

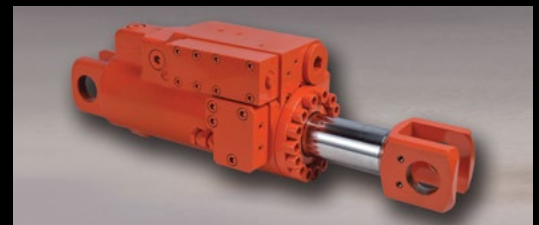
Enclosed Main Frame Protects Piston and Hydraulic Hoses



Bolt-On Replaceable Wave Shaped Cutting Blades

Faster, more efficient demolition and processing of scrap material

This new design incorporates abrasion resistant, high-strength bolt-on replaceable waved shape cutting blades for better grip and increased control of material, as well as, a robust handling tip for superior manipulation while processing scrap. In addition, NPK shears come with full 360° power rotation for maximum versatility.



NPK's exclusive cylinder design improves cutting power to handle the toughest jobs

Integral hydraulic intensifier system automatically boosts power when the jaws meet resistance, providing maximum shearing force and faster cycle times, improving productivity with a greater power-to-weight-ratio.

Competitive systems need larger cylinders to equal the force developed by the more compact NPK intensifier system.



NEW "EH" Models

This new adaptation incorporates the rotation circuit, eliminating the need for a second hydraulic circuit dedicated to rotation to be installed on the carrier. This means "EH" shears can now very easily be switched among multiple carriers – great for rentals!

Using just the primary auxiliary circuit on the machine, the valve switches flow from jaw open/close to rotation left/right. After mounting the unit to the carrier, all that needs to be done is to run a power cable down the boom/stick and tie into 12V on the machine.

Additionally, top mounting brackets used to attach "EH" shears to your carrier are also compatible with existing PH hammer tops.



NPK Construction Equipment, Inc.

7550 Independence Drive • Walton Hills, OH 44146-5541
Phone (440) 232-7900 • Fax (440) 232-4382

npkce.com

