



Pedestal Breaker Systems



- Heavy-Duty Construction
- Wide Range of Models
- Large Selection of Options
- Systems Custom Designed to Match Your Exact Requirements
- Worldwide Parts and Service

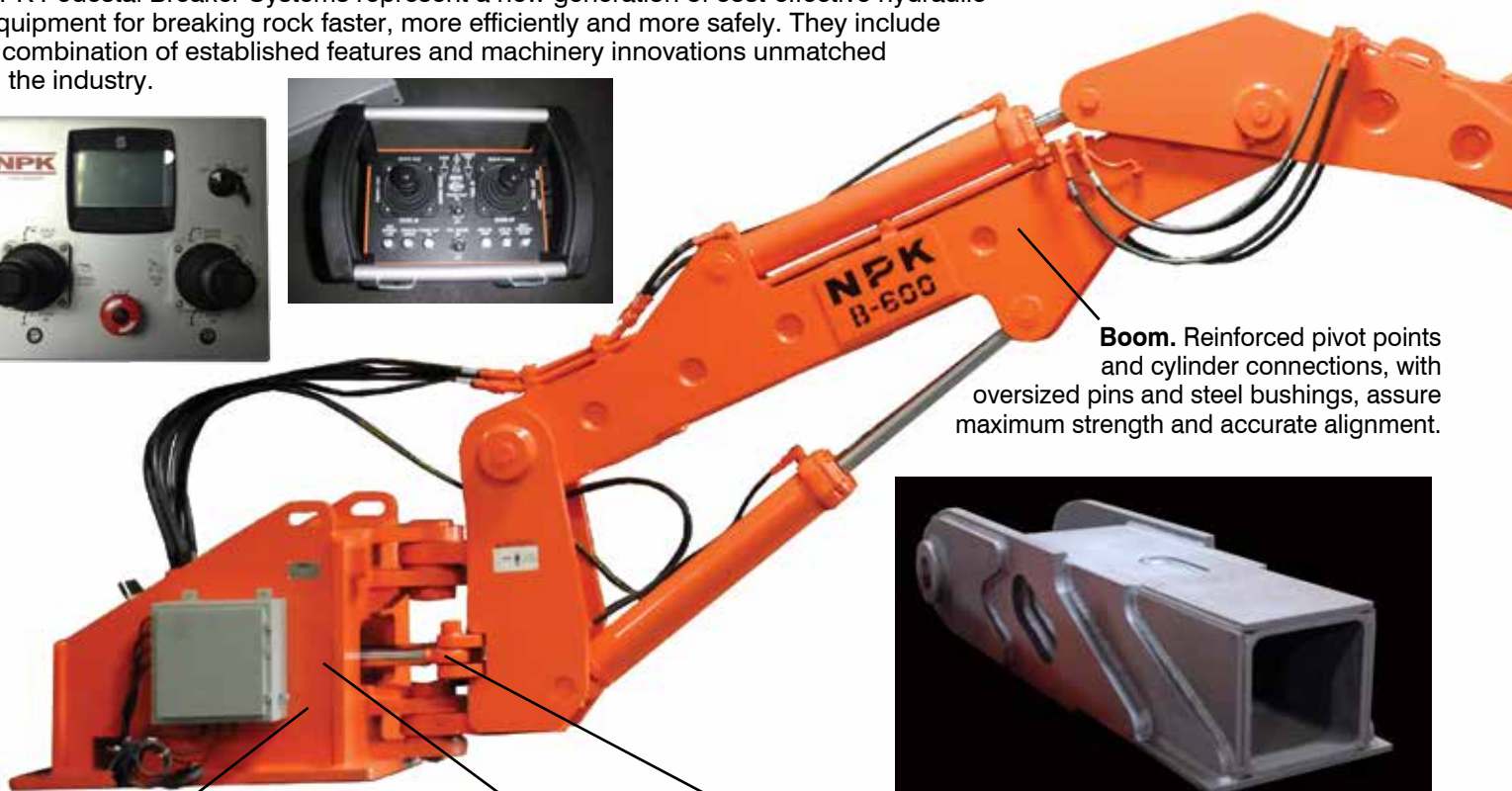
NPK ATTACHMENTS...designed, built and backed by NPK.



Pedestal Breaker Systems

ideal for quarry, mining and industrial applications

NPK Pedestal Breaker Systems represent a new generation of cost-effective hydraulic equipment for breaking rock faster, more efficiently and more safely. They include a combination of established features and machinery innovations unmatched in the industry.



Boom. Reinforced pivot points and cylinder connections, with oversized pins and steel bushings, assure maximum strength and accurate alignment.



All stress points are heavily reinforced.

Mounting base. Massive yet compact to permit installation in a confined area. The base plate (1-1/2" on the 100 series, 2" on the 1,000 series) can be easily modified to facilitate replacement of existing boom system.

Cylinder Swing assembly permits accurate 170° positioning. Reinforced pivot points withstand high stress loads. Swing cylinders are connected directly to the swing frame to eliminate troublesome linkage.



Power units. NPK power units are equipped with 230/460 VAC (optional voltages can be supplied, consult NPK or your dealer), suction strainer, pressure filter, return line filter, level and temperature gauge. Many other options available.

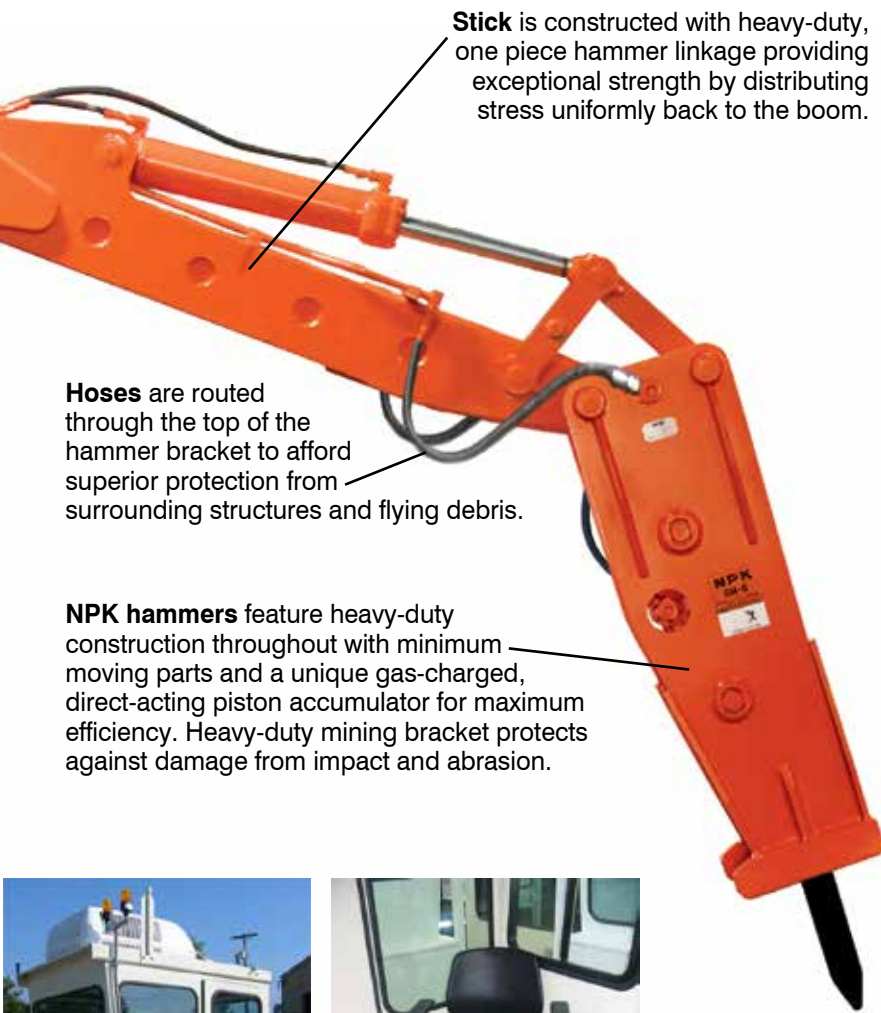


Rotating base assembly incorporates a slewing ring that permits accurate 270° (plus) positioning. Shown with optional auto lube systems.



Heavy-Duty Construction

assures extended service life



- **Wide range of models** from 13ft. - 38ft. for all types of stationary and portable crusher installations.
- **Systems** custom designed to match your exact requirements.
- **Choice of proven NPK hydraulic demolition hammers and attachments:** NPK Hydraulic Hammer, Bucket, Grapples, Picks, Compactors, Shears.
- **Large selection of options:**
 - **Lubrication options** – Automatic and manual lubrication systems are available for pedestal booms and hydraulic hammers to ensure trouble free maintenance and max system life.
 - **Power unit options** – Pressure filter and suction strainer. Low fluid, high temp, pressure and return filter replacement indicators. Oil cooler and/or heater. Custom power unit configurations are available to suit any application.
 - **Control options** – Radio, electric hydraulic and operators cab control options are available. Motor starter panel options can mount directly to the power unit for a turnkey system, only on-site power would need to be provided to run the system.
- **Nationwide parts and service support** through nearly 300 NPK distributor outlets.
- **Keep production on schedule.** NPK systems break oversize rock and eliminate bridging, maintaining uninterrupted flow of material through the crusher. Reduce crusher downtime.
- **Heavy-duty construction** enhances reliability and assures long, trouble-free operation.
- **Site applications drawing** prepared by a NPK pedestal boom specialist to ensure optimal reach over feeder and crusher. An NPK representative can travel to site and take measurements to ensure accurate component placement.



Maximize production. Improve production throughout by maintaining the flow of material to the crusher, and improving hauling efficiency by reducing loader sorting.



NPK PEDESTAL BREAKER SYSTEMS

Custom designed to match your exact requirements

NPK Pedestal Boom Specifications

Pedestal Boom Model	Horizontal Reach with Hammer (ft/m)	Vertical Reach w/o Hammer (ft/m)	Swing Rotation (°)	Boom Weight (lb/kg)
---------------------	-------------------------------------	----------------------------------	--------------------	---------------------

NOTE: (Horizontal measurements are from center of swing to center of tool with hammer in vertical position)



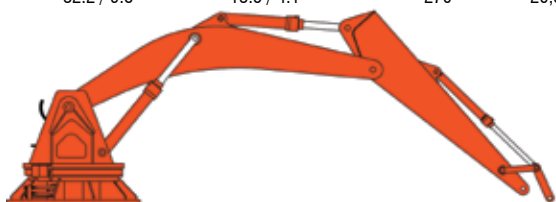
B40	13.5 / 4.1	4.8 / 1.5	170°	5,200 / 2,359
B50	16.3 / 5.0	6.6 / 2.0	170°	5,500 / 2,495



B400	14.8 / 4.5	4.3 / 1.3	170°	8,000 / 3,629
B500	17.5 / 5.3	6.6 / 2.0	170°	8,500 / 3,856
B600	19.9 / 6.1	8.3 / 2.5	170°	9,500 / 4,309
B700	23.5 / 7.2	11.8 / 3.6	170°	10,000 / 4,536
B800	26.5 / 8.1	14.1 / 4.3	170°	10,500 / 4,763



B550	20.5 / 6.2	7.3 / 2.2	270°	11,000 / 4,990
B650	23.4 / 7.1	10.6 / 3.2	270°	11,500 / 5,216
B5500	21.9 / 6.7	7.5 / 2.3	270°	18,100 / 8,210
B6500	25.2 / 7.7	9.4 / 2.9	270°	19,000 / 8,618
B7500	28.9 / 8.8	11.7 / 3.6	270°	19,700 / 8,936
B8500	32.2 / 9.8	13.5 / 4.1	270°	20,300 / 9,208



B8500HD	30.2 / 9.2	18.7 / 5.7	270°	35,000 / 15,876
B9500HD	32.2 / 9.8	20.3 / 6.2	270°	38,000 / 17,237
B10500HD	34.4 / 10.5	23.0 / 7.0	270°	40,600 / 18,416
B11500HD	38.1 / 11.6	27.2 / 8.3	270°	43,000 / 19,504

All booms are complete with controls. Numerous options are available. If a different length or configuration is needed, please contact NPK.

Hammer Compatibility

	PH-2	PH-3	PH-4	GH-6	GH-7	GH-9	GH-10	GH-12	GH-15
B40									
B50									
B400									
B500									
B600									
B700									
B800									
B550									
B650									
B5500									
B6500									
B7500									
B8500									
B8500HD									
B9500HD									
B10500HD									
B11500HD									

NPK Heavy Duty Hydraulic Hammer and Power Unit Specifications

Hammer Model	Impact Energy Class (ft lb)	Impact Frequency (bpm)	Oil Flow (gpm/lpm)	Hammer Operating Pressure (psi/bar)	Hammer Working Weight (lb/kg)	Tool Diameter (in/mm)	Maximum Unit Horsepower (hp/kw)	Pump Pressure (psi/bar)	Power Unit Reservoir Capacity (gal/l)	Dry Weight (lb/kg)
PH-2	500	500-1,200	7-16/25-60	2,465/170	610/275	2.6/66	30/22	2,400/165	75/284	1,100/499
PH-3	750	500-1,150	12-26/45-100	2,465/170	990/450	3.0/76	30/22	2,400/165	75/284	1,100/499
PH-4	1,300	400-1,000	13-32/50-120	2,465/170	1,235/560	3.4/86	40/30	2,700/186	75/284	1,200/544
GH-6	2,000	500-800	24-40/90-150	2,400/165	2,500/1,135	4.2/106	50/37	2,900/200	75/284	1,300/590
GH-7	2,500	400-750	26-48/100-180	2,600/180	2,730/1,240	4.6/116	60/45	3,100/214	75/284	1,500/680
GH-9	3,000	500-670	40-53/150-200	2,600/180	3,420/1,550	5.0/126	125/93	3,100/214	150/568	2,765/1,254
GH-10	4,000	400-550	44-55/165-210	2,600/180	4,690/2,125	5.4/136	125/93	3,100/214	150/568	2,765/1,254
GH-12	5,500	380-480	45-58/170-220	2,650/183	6,135/2,785	5.7/146	125/93	3,150/217	150/568	2,765/1,254
GH-15	8,000	320-400	53-66/200-250	2,600/180	7,300/3,310	6.1/156	150/112	3,100/214	150/568	2,900/1,315

Hammers are equipped with heavy duty, abrasion resistant mounting brackets, cross-cut chisel tool and gas charging kit. NPK Power Units are equipped with 230/460 VAC, 3-Ph 60 Hz, T.E.F.C. motors, return line filter, level and temperature gauge. Options available. Specifications subject to change without notice.



NPK Construction Equipment, Inc.
7550 Independence Drive
Walton Hills, OH 44146-5541
Phone (440) 232-7900
Toll-free (800) 225-4379
Fax (440) 232-4382
Internet: www.npkce.com

Sold and Serviced by:

Each product sold by NPK is subject to an express written warranty. NPK makes no other warranty, express or implied, including any warranty of merchantability or fitness for any particular purpose. NPK is not liable for any incidental or consequential damages.